

# Rail Served Manufacturing Facility

4400 Don Cayo Drive  
Muskogee, OK 74403  
[www.cbre.com/tulsa](http://www.cbre.com/tulsa)

## Port of Muskogee

### Property Features

- + ±139,872 SF Total\*
  - ±132,878 SF Warehouse\*
  - ±6,994 SF Office\*
- + Up to 24' Clear Height
- + (1) 12' x 16' Overhead Door
- + (1) 12' x 12' Overhead Door
- + (9) 9' x 10' Dock High Doors
  - Edge of Dock Levelers
- + Fully Sprinklered
- + Exhaust Fans
- + Webster Heaters in Warehouse
- + Fluorescent Lighting
- + Heavy Power - up to 1600 Amps\*
- + Fully Fenced and Gated
- + Active Rail Spur serviced by Union Pacific
- + via Port Muskogee Railroad
- + Built in 1981; Renovated in 2009
- + Zoned I-1 (Light Industrial) - Port/Industrial
- + Waterway Access to the Arkansas River
- + Convenient Access to Muskogee Turnpike

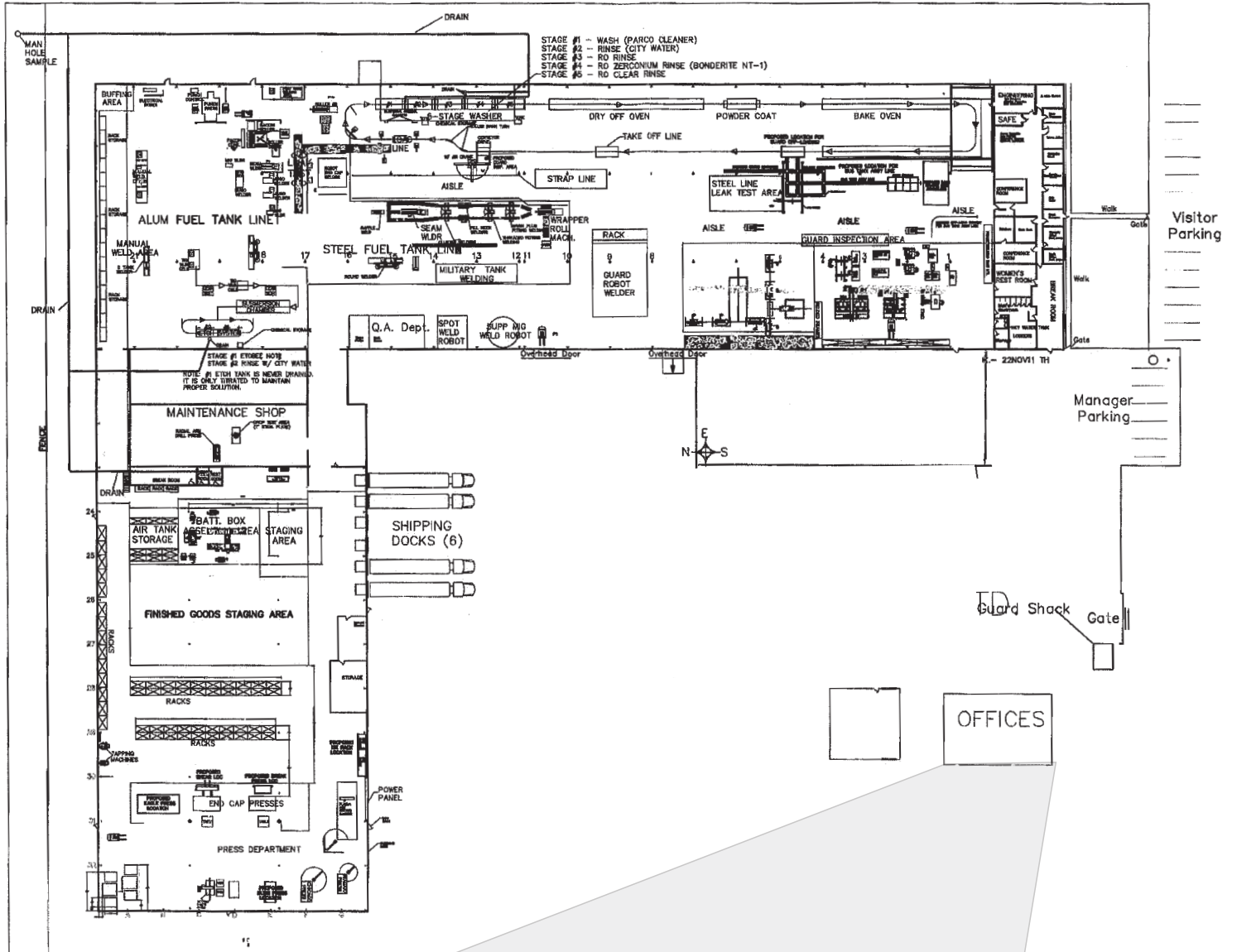
\* Source: Appraisal & Owner

Located on ±15.09 Acres\*

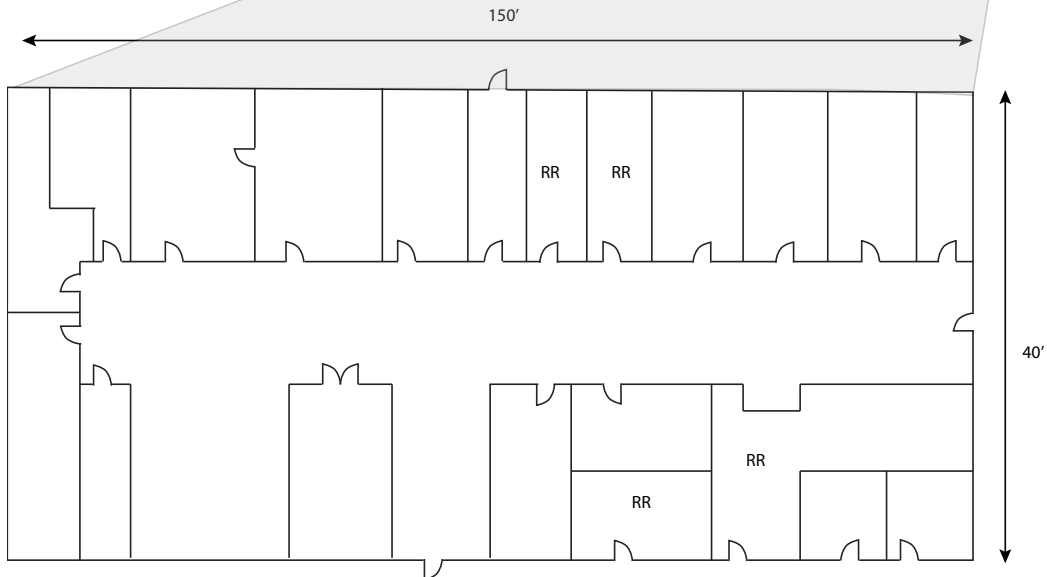


# Rail Served Manufacturing Facility

4400 Don Cayo Drive | Muskogee, OK 74403



Office Floor Plan



\*Drawing not to scale

# Property Overview

CBRE, Inc. is pleased to present the rail-served manufacturing facility located at 4400 Don Cayo Drive in Muskogee, Oklahoma, for sale or lease. This is a good quality, one-story manufacturing facility comprised of five (5) buildings totalling ±139,872 square feet. The facility includes ±132,878 square feet of warehouse space and ±6,994 square feet of office space.

The facility consists of steel construction that was originally built in 1981 and was later renovated in 2009. The facility is located on ±15.09 acres with access to an active rail spur serviced by Union Pacific Railroad and is located at the Port of Muskogee. The Port of Muskogee provides access to airports, interstates, Class I rail, a designated Foreign Trade Zone and year-round water access to 21 states and globally via the Gulf of Mexico.

# 139K

Approximate Sq. Ft.

# 15

Acre Site

# 24'

Clear Height

# Facility Strengths

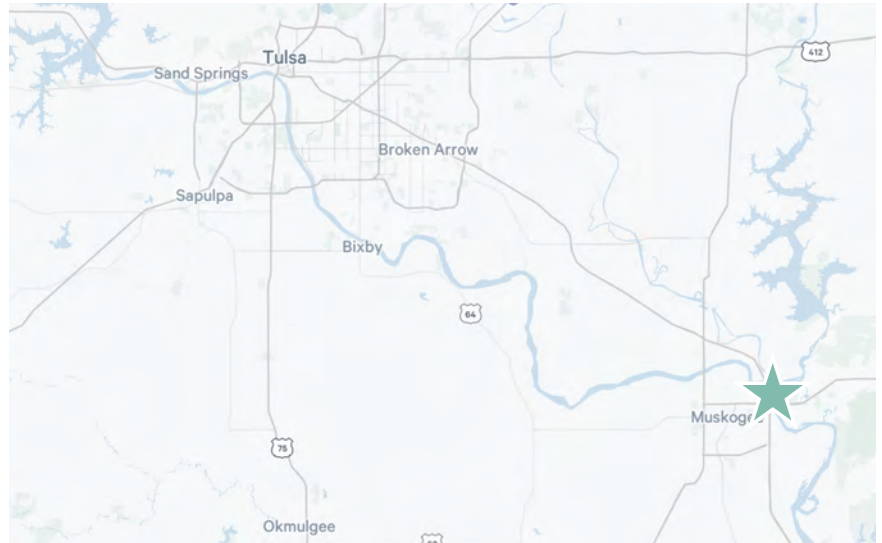
- + Heavy Electrical Service distributed throughout
- + Dock High Loading with Edge of Dock Levelers
- + Up to 24' Clear Height in Main Building
- + 40' Clear Height in Maintenance Shop
- + Fully Fenced and Gated Site with Controlled Access
- + Level Topography
- + Zoned I-1 Port/Industrial to accommodate most types of Industrial Development as well as Business Parks
- + Waterway Access to the Arkansas River
- + Access to an Active Rail Spur serviced by Union Pacific Railroad via Port Muskogee Railroad
- + Located at the Port of Muskogee with Muskogee Turnpike frontage





## Why Muskogee, OK

- + #3 Largest Manufacturing Community in Oklahoma  
(Portmuskogee.com, 2024)
- + #4 Ranked States for Oil Production  
(Commodity.com, November 2021)
- + #5 County in Oklahoma for Capital Investment  
(Portmuskogee.com, 2024)
- + #7 Hardest Working States in America  
(Wallethub, 2023)
- + #10 Lowest Tax Burden State in the U.S.  
(U.S. Census, February 2021)
- + #11 Best States to Start a Business  
(Wallethub, July 2021)
- + #11 Best States for Manufacturing  
(Site Selection Group, December 2022)
- + #13 Largest City in Oklahoma by Population  
(Muskogeechamber.org, 2024)



## Contact Us

**David Glasgow, SIOR, CCIM**

First Vice President  
+1 918 392 7205  
david.glasgow@cbre.com

**Alex Powell, CCIM**

Vice President  
+1 918 392 7231  
alexander.powell@cbre.com

**Kurt Giller, CCIM**

Senior Associate  
+1 918 392 7265  
kurt.giller@cbre.com

© 2024 CBRE, Inc. All rights reserved. This information has been obtained from sources believed reliable, but has not been verified for accuracy or completeness. You should conduct a careful, independent investigation of the property and verify all information. Any reliance on this information is solely at your own risk. CBRE and the CBRE logo are service marks of CBRE, Inc. All other marks displayed on this document are the property of their respective owners, and the use of such logos does not imply any affiliation with or endorsement of CBRE. Photos herein are the property of their respective owners. Use of these images without the express written consent of the owner is prohibited. Licensees of CBRE are participants in the ownership of this property.

# PORT MUSKOGEE

SCAN TO LEARN  
MORE ABOUT  
PORT MUSKOGEE'S  
ADVANTAGES



As one of the nation's most inland ports, Port Muskogee excels in industries where access is everything – access to markets, talent, and industrial sites. Anchored by a 450-acre intermodal transportation complex located on the banks of our nation's most inland waterway, Muskogee is a thriving economic ecosystem with seamless access to airports, interstates and Class I rail. It's here that highly-skilled and low costs meet to form an ideal business environment for companies looking to reduce costs and reach global markets.

## MOST INLAND

Year-Round Navigable  
Waterway in the US

## 20 STATES & GULF OF MEXICO

Accessible by McClellan-  
Kerr Arkansas River  
Navigation System

## 696,700+ TONS

Of Barge Cargo  
Moved Annually

## 312,300+ TONS

Of Rail Cargo  
Moved Annually

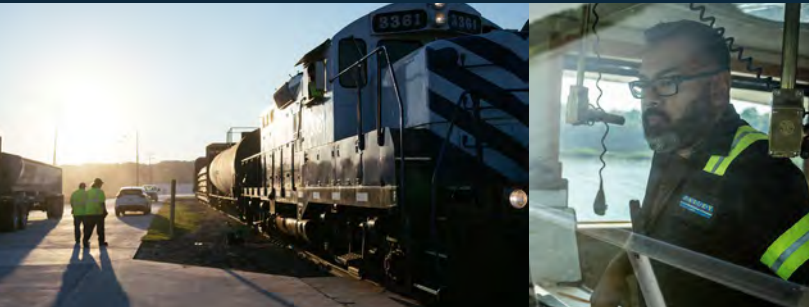
## FOREIGN TRADE ZONE

Port Muskogee is designated by U.S. Customs as Foreign Trade Zone 164. Port Industries enjoy more than just transportation savings. Foreign Trade Zone benefits reduce costs and increase profits, giving Port Industries a competitive edge to meet the demands of global supply chains.

## MULTIMODAL SOLUTIONS

When your business requires you to have it all from the center of it all, look no further than Port Muskogee. From our experienced rail team to our on-site terminal operations, we are proud to offer the following Multimodal Transportation advantages:

- 5.5 miles of railroad with daily services for Class 1 interchange, cargo transfer and storage
- Dedicated and affordable rail crew with 40+ years of experience
- Harbor service with 1,200 horsepower towboat
- Fleeting and staging areas for up to 75 barges
- One 35 ton and two 10-ton overhead cranes and a 60-ton mobile crane
- Certified rail and truck scales with 200-ton capacity
- Track excavator for unloading bulk commodities from rail
- \$58 million investment in upcoming infrastructure improvements



## MUSKOGEE AT A GLANCE

**45,000+**  
25 or Older Population  
in Muskogee Co.

**530,000+**  
People Employed  
Within 45-Minutes

**94%**  
of U.S. Population  
Accessible Overnight  
by Road

**3**  
Higher Education  
Institutions

**#4**  
Most Affordable  
City in U.S.

**#5**  
County in OK for  
Capital Investment

**Kimbra Scott**  
PORT DIRECTOR

- 📞 (918) 682-7886
- ✉️ kimbra@portmuskogee.com
- 🌐 PortMuskogee.com



**PORT MUSKOGEE**  
SUCCESS FLOWS FROM MUSKOGEE



53 Miles To Tulsa

MARSHALLING YARD

MUSKOGEE TURNPIKE

MEGA RAIL SITE  
44 ACRES

vallourec

MUSKOGEE WATER PLANT

MCCLELLAN-KERR ARKANSAS RIVER NAVIGATION SYSTEM (MKARNS)



SCAN TO VIEW ALL AVAILABLE INDUSTRIAL SITES IN MUSKOGEE

E HARRIS RD

LEASED

PLANNED 50K SF RAIL SERVED WAREHOUSE

LEASED

NEW 80 FT HEAVY LIFT DOCK PLANNED

TRACT J  
18 ACRES

PARAGON INDUSTRIES

METALS USA

LEASED

LEASED

QLF

ERGON

DON CAYO DR

N 43RD ST E

## OVERVIEW

**2**  
Industrial Sites Available

**3,000 FEET**  
Of Navigable Waterfront

**9 FEET**  
Channel Depth

**CITY-OWNED**  
Water & Sewer

**450 ACRES**  
Of Industrial Land

**OG&E**  
Electric

**350 FEET**  
Concrete Wharf

**ONG**  
Natural Gas

**20**  
Mooring Dolphins

**AT&T**  
Fiber

- Available Sites
- Leased Sites
- Highways
- Railway
- Minor Roads



## US INLAND WATERWAYS

DISTANCE FROM PORT MUSKOGEE TO MAJOR PORTS

CITY	BARGE TIME (DAYS)
MEMPHIS	5
BATON ROUGE	7
NEW ORLEANS	8
CHICAGO	10
PITTSBURGH	14

